

Thursday 21st
December

Year 3 have been making delicious tacos this week as part of their DT unit; Cook Well, Eat Well.



Secret Santa

Thank you to Moreton FC Community Fundraising for the generous gift donations. These have now all been handed out to make Christmas that little bit more special for some of our families.

Thanks also to the shops on Seabank Road for the generous toy donations. The children in our hubs were made up to receive a Christmas gift.



*We want to wish you a Merry Christmas
from the bottom of our hearts!*

Feliz Navidad!

The Poppies have learnt how to say Merry
Christmas in Spanish!



We have had the best week learning some Christmas
songs, decorating party hats and icing biscuits to get
ready for our party. We played pass the parcel, musical
statues, had a mini disco and enjoyed eating some party food!



**Merry
Christmas**





Presenting the cast of our 2023 Nativity.

Key Stage 1 have worked incredibly hard this term learning all their songs and lines. Well Done to everyone!



Hot Chocolate with the Head

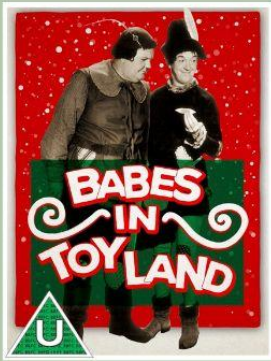
These children were invited to Mr Armer's hot chocolate afternoon. They were nominated by teachers and parents in recognition of them going above and beyond or excelling in an area, not just academically.



Well done to: Chase, Thomas, Keethanna, Artie, Ruby, Cobi, Evelyn, Arielle, Shaynae, Vicky, Amelie, Lillie-Mae, Miah, Sid, Ella and Rosie. If your child has done something that you feel is worthy of a hot chocolate then send in details to d.armer@newbrighton.wirral.sch.uk

Thanks for all of the parent nominations last week, we take them all into consideration- looking forward to next week

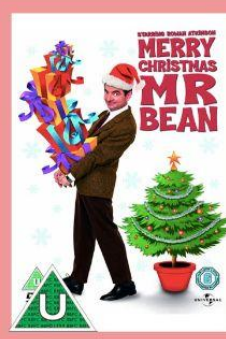




Babes in Toyland
1hr 17mins
Ollie Dee and Stannie Dum must save Mother Peep's shoe house from villain Silas Barnaby in this odd classic. Can they save Bo Peep and Toyland from a terrible fate?



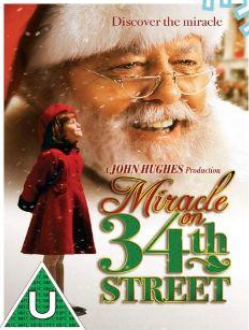
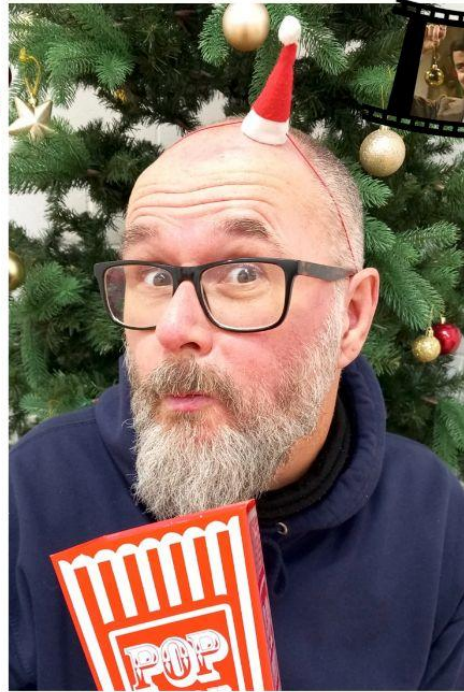
The Muppet Christmas Carol
1hr 25mins
Three ghosts warn Ebenezer Scrooge to change his miserly ways in this fun-packed, musical version of Charles Dickens' famous tale.



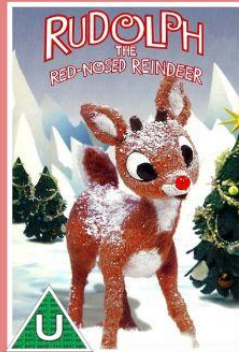
Merry Christmas Mr Bean
30mins
We are used to Mr Bean getting into some scrapes and the festive season is no exception. This time he is picking up all he needs for the big day. What could possibly go wrong..?

Mr Fox's festive filmathon

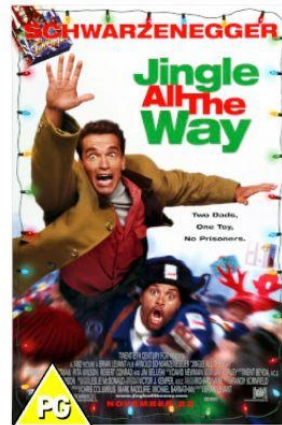
A selection box of delights with family favourites and offbeat treats to enjoy over the school holidays



Miracle on 34th Street 1hr 54mins
Cole's department store in New York has a new Santa, Kris Kringle. He seems like the real deal, but can he make a believer of young skeptic Susan?



Rudolph the Red Nosed Reindeer 47mins
A young reindeer is born with a shiny red nose and he is mocked by the rest of the herd. When fog rolls in on Christmas eve, Rudolph's unique talents come in very useful.



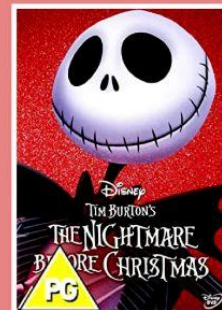
Jingle All The Way 1hr 29mins
Follow the funny misadventures of dad Howard as he tries to track down a rare Turboman doll for his son, Jamie.



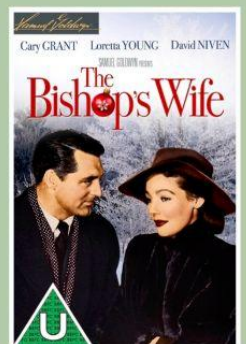
A Christmas Story 1hr 33mins
A BB gun is top of the present list for 9-year-old Ralphie but, try as he might, he just can't stay out of trouble.



Santa Claus the Movie 1hr 47mins
When the toys made by elf Patch fall apart, he leaves Santa's workshop in disgrace. In New York he finds another job with dastardly toy manufacturer BZ. Can Patch and Santa make up before the most important night of the year?



The Nightmare Before Christmas 1hr 16m
King of Halloween Jack Skellington visits Christmas Town and hatches a plan to make the holiday spooky.



The Bishop's Wife 1hr 49 mins
Bishop Henry's prayers for divine intervention are answered when angel Dudley turns up to help.

Olive the Other Reindeer 45mins
Santa's sleigh is a reindeer down and dog Olive decides she has what it takes to step in.



Father Christmas 25mins
With 'another bloomin' Christmas' looming, Santa decides to take a break and go travelling.





A Winter Poem



When it's winter it
sometimes snows,
And the snowflakes might
even glow.

Outside it is very cold,
And I really don't like being
told,

That I have to go to bed,
When I'd rather play on my
sled.

When it snows I like to play,
Until the sun goes away.

Now it is Christmas Eve,
And I am hoping to receive,
Lots of gifts from Santa
Claus,
And hear the sound of doggy
paws.

There are decorations on the
tree,
And the house is filled with
family.

I am grateful for it all,
And these Christmas' while
I'm small.

It is winter and it's dark,
But I still feel that cosy
spark.

Evelyn E and Evelyn L, 3RM



Home Reading Champions

Class	%	Class	%
1JH	58%	4JH	67%
1BT	88%	4CH	74%
1OT	88%	HUB2	69%
2FP	92%	5LC	87%
2SA	79%	5NM	58%
2RB	54%	5DC	19%
3NF	88%	6HC	47%
3RM	68%	6RS	43%
3LM	68%	6TS	93%
4LJ	70%	Total	69%

Well done to class 6TS who have the highest reading average this week
Please try to read 5 times a week with your child - the results of regular reading make such a difference to them across all subjects in the curriculum.



Christmas tips for SEND families!

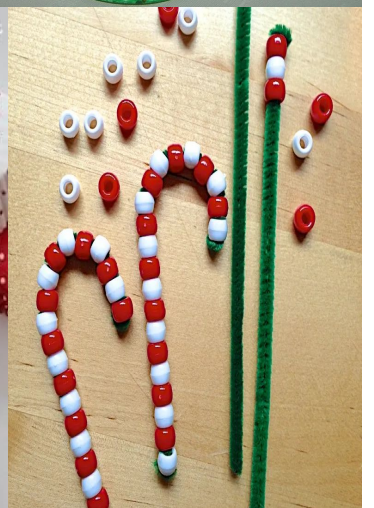
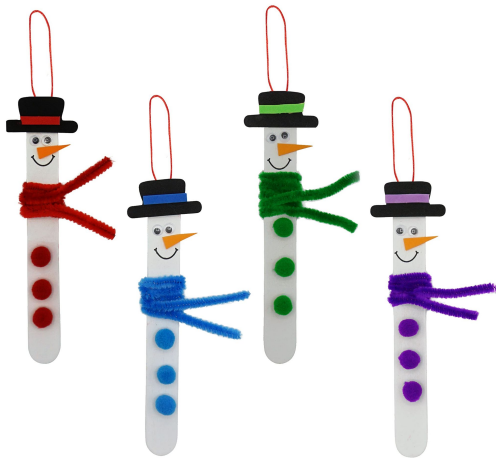
- Put presents in one big box and let your child open them at their own pace over the following days
- Avoid surprises by picking gifts from their list and wrapping them in clear cellophane (or not at all)
- Add batteries to toys before wrapping
- No food rules. Who says pizza and pot noodles can't be Christmas dinner?
- You do you! Don't feel guilty telling friends or relatives if something doesn't work for you
- Don't put unrealistic pressures on yourself. The holidays can be overwhelming for everyone, so stick to your regular routine if you want to

contact [\[redacted\]](#)



Christmas Crafts

Here are a few ideas to keep you busy over the Christmas holidays!





Should I keep my child off school?



Yes

Until...

Chickenpox	at least 5 days from the onset of the rash and until all blisters have crusted over
Diarrhoea and Vomiting	48 hours after their last episode
Cold and Flu-like illness (including COVID-19)	they no longer have a high temperature and feel well enough to attend. Follow the national guidance if they've tested positive for COVID-19.
Impetigo	their sores have crusted and healed, or 48 hours after they started antibiotics
Measles	4 days after the rash first appeared
Mumps	5 days after the swelling started
Scabies	they've had their first treatment
Scarlet Fever	24 hours after they started taking antibiotics
Whooping Cough	48 hours after they started taking antibiotics

No

but make sure you let their school or nursery know about...

Hand, foot and mouth	Glandular fever
Head lice	Tonsillitis
Threadworms	Slapped cheek



SCAN ME

Advice and guidance

To find out more, search for health protection in schools or scan the QR code or visit <https://qrco.de/minfec>.

Top Tips for SETTING UP PARENTAL CONTROLS ON NEW DEVICES

In children's eagerness to start enjoying new digital gadgets immediately, it can be easy to overlook setting up the type of parental controls that can help to protect them online. If you don't sort those out from the very start, it can be an uphill battle – technologically and psychologically – to impose such controls later. Here's our rundown of what to look for when setting up the various internet-enabled devices that might be lurking under the tree at this time of year.

IPHONE

If your child's lucky enough to be getting their own iPhone, parental controls can help avoid issues like screen addiction and unsuitable content. Go into the settings and scroll down to 'Screen Time'. From here you can customise important settings including time limits on using the device, communication restrictions and content blockers. You can also lock your changes behind a passcode.

ANDROID

With Android devices, Google's Family Link app is your friend. You'll need a Google account – and a separate one for your child, which you should use when first setting up the device. Then, in Family Link on your own device, select 'Add Child' and enter their account details. This lets you specify limits on daily usage, restrict certain apps, block particular content and more.

PLAYSTATION

You can prep for a PlayStation before it's even unwrapped. At my.account.sony.com, create an account, then go to Account Management > Family Management > Add Family Member to set up your child's account, which you'll use to sign in on the console. You can restrict the age ratings of the games they can play and who they can talk to. On the PS5, you can make exceptions for any games you think are acceptable despite their high age rating.

IPAD

iPad parental controls are identical to those on iPhones. However, if you've got a shared family iPad and want to ensure your children aren't seeing anything age-inappropriate after you hand them the device, there's a feature called Guided Access (under Settings > Accessibility > Guided Access). With this switched on, young ones can only use the app that's currently open.

XBOX

The Xbox Family Settings app helps you manage which games your child can play (and when). You'll need to set up the console with your own account and then add a child profile. Make sure your account's password protected, so your child can't alter your choices later. You'll be walked through the functions at setup, but you can also reach them manually via Settings > Account > Family Settings.

NINTENDO SWITCH

Download the Nintendo Switch Parental Controls app on your phone, and you'll be shown how to link it to the console. Once that's done, you can limit how long your child can play each day, decide what age ratings are permitted and more. You'll also get weekly updates on how often they've used the device. These controls are accessible through the console itself, but the app is usually easier.

WINDOWS 11 PCS

On Windows 11, account management is key. Set up the device with your own account as the admin. Then go to Settings > Accounts > Family and Other Users and create your child's account (if you've already done this on a previous PC, just log in with those details). Microsoft Family Safety (either the app or the site) then lets you control screen time, what content children can view and more.

CHROMEBOOKS

Chromebooks' parental controls are managed via the Family Link app. Unlike an Android device, however, you need set up the Chromebook with your own account first, then add your child's. Go to Settings > People > Add Person and input your child's Google account details (or create a new account). Your child can then log in, and you can monitor what they're up to via Family Link.

MACS

Like iPhones, parental controls for Macs are managed via the Screen Time settings. Again, the crux here is to set yourself up as the administrator before adding any child accounts. In the settings, look for Users & Groups to create your child's account, then – while on their profile – use the screen time options to place any boundaries around apps, usage and who your child can communicate with (and vice versa).

SMART TVS

Smart TVs typically have their own individual parental controls. One of the most popular brands is Samsung – and on their TVs, you can control the content available to your child. In the Settings menu, under 'Broadcasting', you can lock channels and restrict content by its age rating. Even this isn't foolproof, however: some apps (like YouTube) might still let children access unsuitable material.

Meet Our Expert

Barry Collins is a technology journalist and editor with more than 20 years' experience of working for titles such as the Sunday Times, Which?, PC Pro and Computeractive. He's appeared regularly as a tech pundit on television and radio, including on BBC Newsnight, Radio 5 Live and the ITV News at Ten. He has two children and writes regularly on the subject of internet safety.



The
National
College

NOS
National
Online
Safety®
#WakeUpWednesday



Attendance

We aim for 100% our target is 98%

Remember that school starts at 8:50am and any time after this is late. Formal lessons start at 9:05am and the children need to be in, registered and settled for this time.



Class	%	Minutes Late	Class	%	Minutes Late
Nursery	96.5	29	3RM	85.4	79
Poppies	97.6	151	3LM	93.2	111
Sweetpeas	93.1	0	4LJ	77	142
Buttercups	94.4	79	4JH	88.5	206
1JH	94.6	53	4CH	91.9	109
1BT	89.6	11	HUB 2	89.2	59
10T	85.6	67	5NM	93.8	44
2FP	90.4	10	5DC	87.2	99
2RB	90.8	99	5LC	90.7	246
2SA	85.8	81	6HC	89.3	31
HUB 1	99.1	50	6RS	87.3	15
3NF	86.8	12	6TS	92.4	0

Whole School

Whole School Attendance	90.4%		Lost Learning	29 hr 27 min
--------------------------------	--------------	--	----------------------	-------------------------

Reporting a child's absence

Please remember to phone each day to report your child's absence. You can speak to the office staff or leave absence reasons on the answer machine. Please let the office know not other school staff as messages are sometimes not relayed. If reasons are not provided each day, an unauthorised mark will be entered on the register. Punctuality is also very important, We now have a signing in screen for late arrivers and early leavers at reception.



MERRY
CHRISTMAS

And Happy New Year
from

