

# New Brighton Weekly News



Friday 18th October,



Year 4 are learning about the function of the teeth this week. We used mirrors to count our teeth and compare the teeth we have lost. We ate different food and observed which teeth were used for chomping, grinding and slicing.

**SENDLO**  
WIRRAL'S LOCAL OFFER OF SEND SERVICES

An informal information sharing session with a marketplace of SEND Support services.

All Parents & Carers of Wirral SEND children & young people welcome.

No need to book  
Thursday 24th October 2024  
4-6pm

Ridgeway High School  
Noctorum Avenue  
Prenton  
CH43 9EB

Hope to see you there!



This month's SEND Information session is going to be hosted by Ridgeway High School on Thursday 24<sup>th</sup> October from 4-6pm.

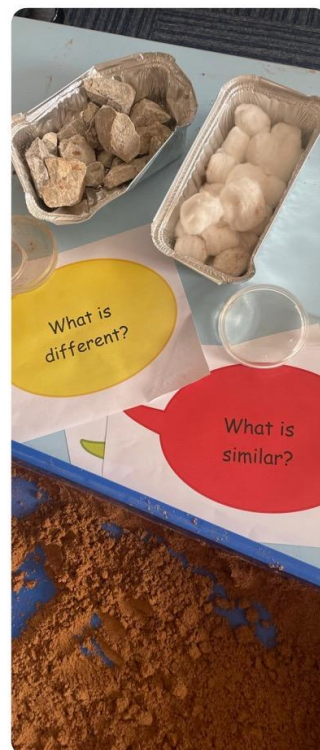
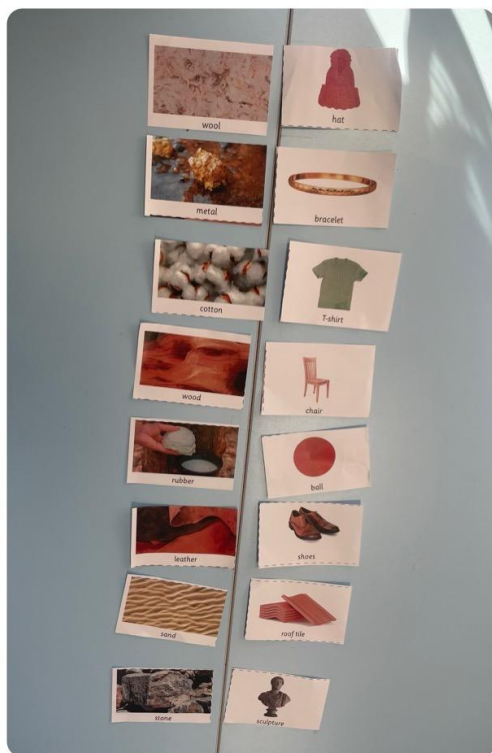
These monthly events are open to all Wirral SEND families not just those attending the host school.

**SENDLO**  
WIRRAL'S LOCAL OFFER OF SEND SERVICES



# Year 1 Everyday Materials

Year 1 are learning about everyday materials in their science lessons this term. We have explored everyday materials such as wood, plastic, paper, wool, sand, stone, glass and fabric. We have also started to explore what objects are made from everyday materials and their properties.





Places are filling up fast for our Trafford Centre trip. Book your seat now to make sure you don't miss out!

JOIN US FOR A

*Christmas*

SHOPPING TRIP

THURSDAY 28TH NOVEMBER

DEPARTURE - 9:15AM FROM  
SEABANK ROAD

RETURN - 2:15PM LEAVE  
TRAFFORD CENTRE

COACH  
TICKET  
£7.50pp

**BOOK  
NOW**

Speak to Miss Evans or Mrs Bostock to  
secure your place!

*The*  
Trafford Centre

THE TRAFFORD CENTRE  
MANCHESTER  
M17 8AA







# World Values Day - Thursday, 17th October 2024

World Values Day is an annual campaign to increase the awareness and practice of values around the world. Values are what matter most to us.

They motivate and guide us. They are the passion in our hearts, the reason we do the things we do. In a world that feels increasingly divided, values help unite us. They are the glue holding together our communities and societies. They reflect our common humanity. They are powerful.

Join the conversation at [#WorldValuesDay](https://www.worldvaluesday.org/)  
What will you be inspired to do?

## How To Get Involved



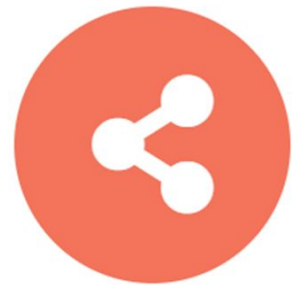
### Choose a Value

Choose a value that's important to you. Are you really living that value to the full?



### Act on that Value

Put that value into action. Do something to make it a bigger part of your life.



### Tell the World!

Spread the love and bring us all a bit closer by sharing your story.

The theme for this year's campaign is Bringing Values To Life. If we can all bring our values to life as individual citizens, families, groups, organisations and communities, we can reach past the anger and negativity that divides us and change the world for the better.

# Hot Chocolate with the Deputy Head

These children were invited to Mr Jones's hot chocolate afternoon. They were nominated by teachers and parents in recognition of them going above and beyond or excelling in an area, not just academically.



**Well done to: Ophelia, Nola, Tilly, Casper, Hazel, Theodore, Betsy, Sol, Charlie, Hughie and Thomas**

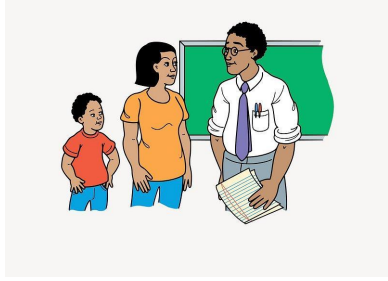
If your child has done something that you feel is worthy of a hot chocolate then send in details to

[d.armer@newbrighton.wirral.sch.uk](mailto:d.armer@newbrighton.wirral.sch.uk)

Thanks for all of the parent nominations last week, we take them all into consideration- looking forward to next week



## Parents Evening.



Next half term, our parents evening will be held on Tuesday 12th and Wednesday 13th of November between 3:45pm and 6:00pm. Appointments will go 'live' on Arbor on Monday 21st October at 6:00pm. If you need to book a virtual appointment please notify your child's class teacher through Class Dojo.



**Our winner of a £20 voucher for The Vale Park Cafe is...**



Remember, all you have to do to be in a chance of winning our weekly prize draw is be in school by 8:50am... simple!  
One raffle ticket for each day.

## Home Reading Champions

Class	%	Class	%
1EG	44%	4HB	64%
1BT	58%	4LM	67%
1OT	32%	HUB 2	50%
2DC	69%	5NM	86%
2RB	92%	5JH	75%
2SA	93%	5MC	81%
3NF	70%	6HC	92%
3CC	77%	6RS	50%
3LC	74%	6TS	89%
4LJ	54%	Total	68%

Well done to class 2SA who have the highest reading average this week and to class 5MC who have the most improved score. Please try to read 5 times a week with your child - the results of regular reading make such a difference to them across all subjects in the curriculum.



This week's Makaton sign is for:

# friend

Brought to you by children from Nutmeg.



Small downward movement twice.





Join us for a

# Silent Spooky Disco



Wednesday 23rd october

F1 & F2 - 3:30pm to 4pm

YR1 & YR2 - 4:15pm to 5pm

YR3 & YR4 - 5:15pm to 6pm

YR5 & YR6 - 6:15pm to 7pm

---



**£2.50**

Entrance fee  
includes a snack





Wirral Lifelong Learning Service are excited to announce they have now developed and released 4 brand new courses focussing on parents/carers and SEND for 24/25.

To register interest contact the business support team on 0151 666 3330 or email [lifelonglearning@wirral.gov.uk](mailto:lifelonglearning@wirral.gov.uk)

Wirral Lifelong Learning Service Presents...

## Positive Parenting - Communication That Works

4 -week course starting Weds 6th November (10am-12pm) at the Lauries

- 1 Develop awareness of the impact of both positive and negative communication
- 2 Explore the most effective ways to communicate for positive outcomes
- 3 Create better connections through different styles of communicating
- 4 Help your child develop their own communication skills

Book Now - contact us on: 0151 666 3330  
lifelonglearning@wirral.gov.uk



## Understanding SEND - Special Educational Needs - and Behaviours (for Parent Carers)

- 1 A short course to make sense of the vast scope of SEND and the four main areas from the SEND code of practice
- 2 Develop understanding of SEND needs and disabilities
- 3 Explore as parent carers strategies and a toolkit to identify your child's needs and celebrate their individual achievements

4 -week course starting Weds 6th November 10am-12pm at the Lauries

To enquire or book contact us by:  
Calling: 0151 666 330  
Email: [lifelonglearning@wirral.gov.uk](mailto:lifelonglearning@wirral.gov.uk)



## BUILDING STRENGTH AS A PARENT CARER

A short course to discuss the day-to-day life of a parent carer and what that involves. Looking at the workload and the ways we can look after ourselves and our family. How being a parent carer can mean that we have additional challenges and examples of how to build strength.

4 -week course starting Fri 8th Nov (10am-12pm) at the Lauries

To enquire or book contact us on: 0151 666 330 or email: [lifelonglearning@wirral.gov.uk](mailto:lifelonglearning@wirral.gov.uk)




## Child Development: Emotions and Psychology

This course looks at the stages your child goes through as they grow, how they develop language and emotions and how you can support your child at each stage.

4 -week course starting Thurs 7th November (10am-12pm) at the Lauries

To enquire or book contact us on: 0151 666 330 or email: [lifelonglearning@wirral.gov.uk](mailto:lifelonglearning@wirral.gov.uk)



Wirral Lifelong Learning Service



WIRRAL









# Attendance

*We aim for 100% our target is 98%*

*Remember that school starts at 8:50am and any time after this is late. Formal lessons start at 9:05 and the children need to be in, registered and settled for this time.*



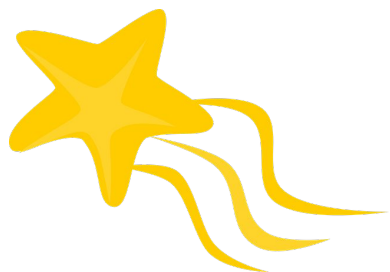
Class	%	Minutes Late	Class	%	Minutes Late
Nursery	96.2	0	3CC	95.5	55
Poppies	92	75	3LC	91.7	115
Sweetpeas	95.7	129	4LJ	93.8	110
Buttercup	96.9	162	4HB	96	80
1EG	93.8	2	4LM	94.1	82
1BT	94.3	141	HUB 2	90.5	179
10T	91	68	5NM	92.3	13
2DC	94.6	83	5JH	89.6	25
2RB	96.3	39	5MC	95.8	195
2SA	97.8	70	6HC	95.7	25
HUB 1	91.7	10	6RS	90.8	136
3NF	96.4	129	6TS	94	78
<b>Whole School</b>					
<b>Whole School Attendance</b>	<b>94.13%</b>		<b>Lost Learning</b>	<b>33HRS</b>	<b>21MINS</b>

## Reporting a child's absence

Please remember to phone each day to report your child's absence. You can speak to the office staff or leave absence reasons on the answer machine. If reasons are not provided each day, an unauthorised mark will be entered on the register.

**Punctuality is also very important, we now have a signing in screen for late arrivers and early leavers at reception.**





# Owl Awards



These children have been exceptional this week.

<b>Nursery</b> Hugo	<b>Class 3CC</b> Ryan
<b>Buttercups</b> Hanna & Sophie	<b>Class 3LC</b> Nisha
<b>Poppies</b> Noah & Madison	<b>Class 4LJ</b> Spencer
<b>Sweetpeas</b> Sophia & Lincoln	<b>Class 4HB</b> Mia B
<b>Class 1EG</b> Damir	<b>Class 4LM</b> Bonnie
<b>Class 1BT</b> Joseph	<b>Class HUB 2</b> Alex
<b>Class 10T</b> All of 10T!	<b>Class 5NM</b> Maisey M
<b>Class 2DC</b> Ryleigh	<b>Class 5JH</b> Hollie G & Rosalie M
<b>Class 2RB</b> Joel	<b>Class 5MC</b> Andrea S
<b>Class 2SA</b> Ibrahim	<b>Class 6HC</b> Noah B
<b>Class HUB1</b> Peter	<b>Class 6RS</b> .Oliver c
<b>Class 3NF</b> Elena	<b>Class 6TS</b> Martha V

